

FLOOR PLAN: BERKSHIRE FRENCH COUNTRY



Specs:

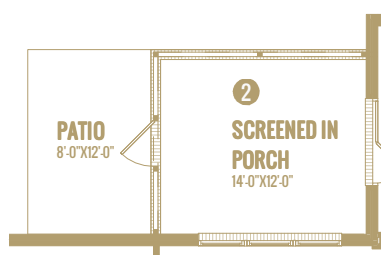
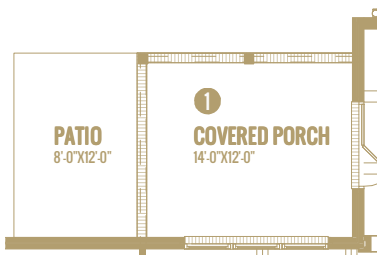
Bedrooms: 3
Bathrooms: 2-3
Square Footage: 2,895 Sq.Ft.
First Level: 2,279 Sq. Ft.
Second Level: 616 Sq. Ft.
Width: 55' - 9"
Depth: 69' - 0"

Options Shown:

- 1 Covered Porch
- 2 Screened in Porch
- 3 Sunroom (Adds 168 Sq.Ft.)
- 4 Upper Level Bath
- 5 Built-ins
- 6 Drop Zone Built-in
- 7 Laundry Sink W/ Cabinets
- 8 Coffered Ceiling at Dining
- 9 Vaulted Ceiling at Great Room

Watercolors, illustrations, and floor plans are for marketing purposes only and are subject to change at builder's discretion. Square footage is outside veneer and should be independently verified. This is not a legal document.
1/9/2025 2:41:11 PM

FLOOR PLAN: BERKSHIRE FRENCH COUNTRY



Watercolors, illustrations, and floor plans are for marketing purposes only and are subject to change at builder's discretion. Square footage is outside veneer and should be independently verified. This is not a legal document.

1/9/2025 2:41:13 PM

FLOOR PLAN: BERKSHIRE FRENCH COUNTRY



UPPER LEVEL BATH



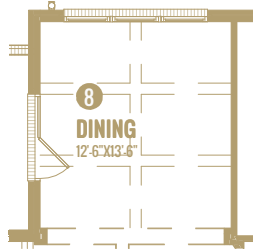
BUILT-INS



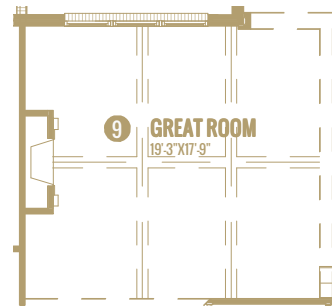
DROP ZONE BUILT-IN



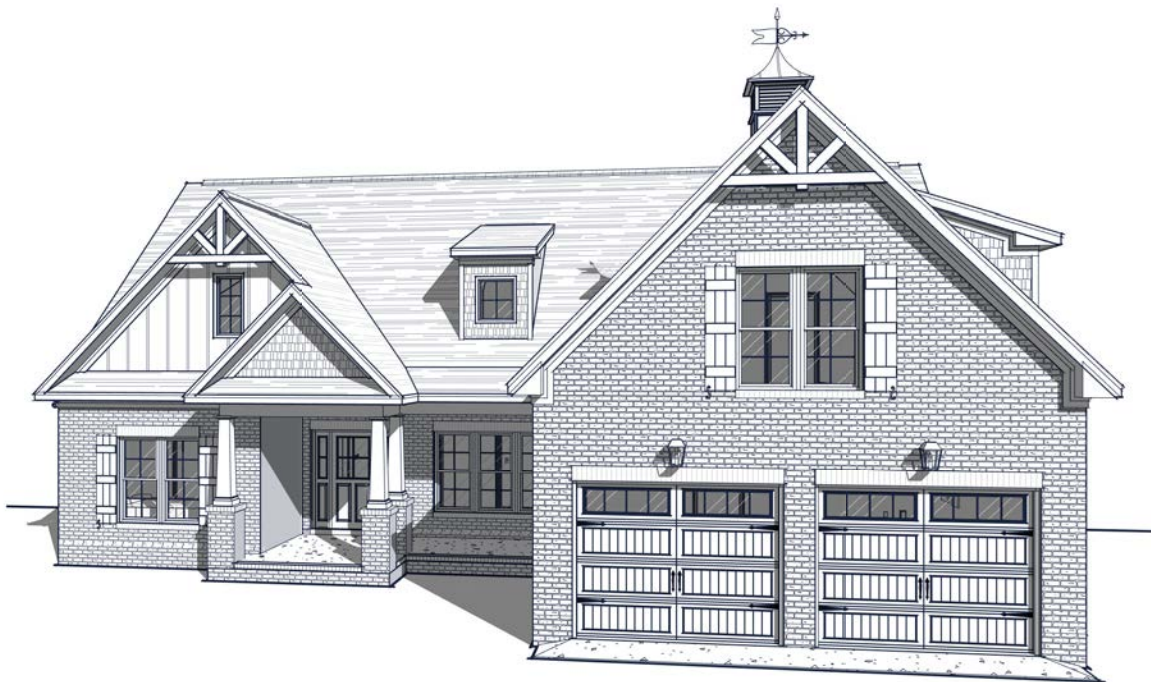
LAUNDRY SINK W/ CABINETS



COFFERED CEILINGS AT CASUAL DINING



VAULTED CEILING AT GREAT ROOM



Watercolors, illustrations, and floor plans are for marketing purposes only and are subject to change at builder's discretion. Square footage is outside veneer and should be independently verified. This is not a legal document.
1/9/2025 2:41:17 PM